



Premium
Benchmarking Report

Q3 2003

Pulmonary Program Comparison

Prepared for: ABC Hospital
Attention: John Doe
123 Main Street
Somewhere IN 12345

CONFIDENTIAL: This report is only to be viewed by authorized personnel of the facility named above.

ORION SOFTWARE DEVELOPMENT

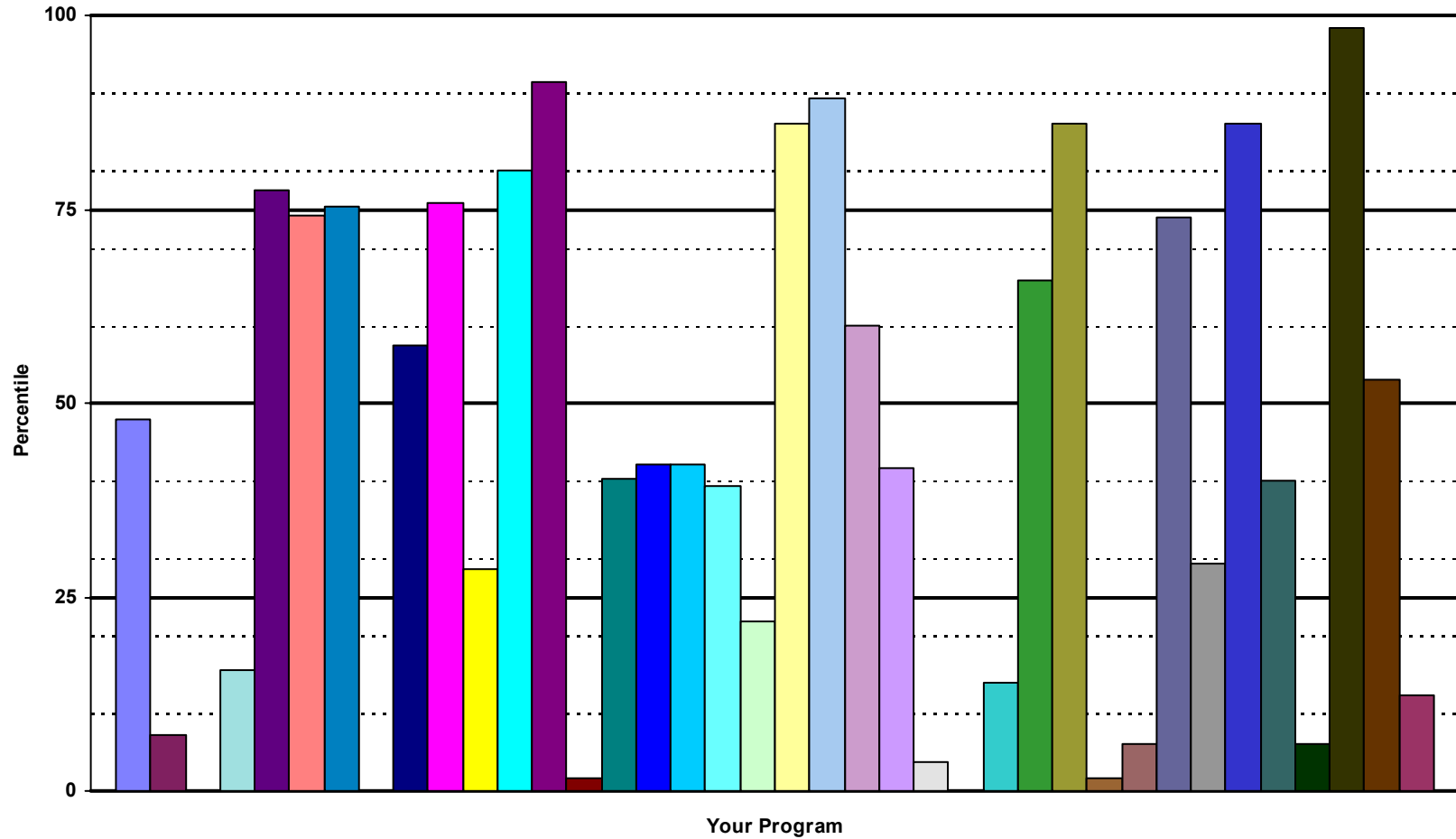
11691 Montgomery Circle
Longmont CO 80504

Phone: (866) ORION-SW
Fax: (720) 494-7951
E-mail: benchmarking@orionoutcomes.com
WWW: orionoutcomes.com

Your Program
Date Range

ABC Hospital
7/1/2002 - 6/30/2003

National Percentile Summary
Your Average Percentile **44.0**



Your Program
Date Range

ABC Hospital
7/1/2002 - 6/30/2003

Measured Change Between Pre Program and Post Program

		Your Program		Programs in ISCVPR					Programs Nationwide					Your Rank
		n	Avg	Count	Avg	StDev	Hi	Low	Count	Avg	StDev	Hi	Low	National Percentile
<u>Behavioral Domain</u>														
<i>Knowledge Test</i>	(0-40)	1	+6.00	20	7.17	5.91	21.33	-4.00	51	7.24	5.83	21.33	-6.00	48
<i>Beck Depression Inventory</i>	(pts.)	1	+5.00	3	-1.71	5.83	5.00	-5.43	15	-2.03	3.92	8.75	-5.43	7
<u>Behavioral Compliance</u>														
<i>Follows Diet</i>	(1-5)	1	-2.00	22	0.25	0.73	2.00	-2.00	56	0.33	0.71	2.00	-2.00	0
<i>Follows Medications</i>	(1-5)	1	0.00	22	0.02	0.18	0.40	-0.60	59	0.07	0.27	1.12	-0.60	16
<u>Exercise Activity</u>														
<i>Days per Week of Exercise</i>	(days/week)	1	+3.00	22	2.13	1.48	4.71	-2.67	63	2.11	1.16	4.71	-2.67	77
<i>Minutes Exercising per Session</i>	(minutes)	1	+45.00	22	35.15	14.41	70.53	15.00	63	36.68	19.30	126.42	5.33	74
<u>Clinical Domain</u>														
<i>Weight</i>	(lbs.)	2	-2.25	25	-0.44	2.71	4.50	-5.00	70	-0.38	2.74	8.50	-5.35	75
<i>Height</i>	(inches)	2	0.00	24	0.02	0.13	0.56	-0.25	70	0.10	0.76	6.00	-1.00	N/A
<i>Percent Body Fat</i>	(%)	2	+0.35	9	-1.66	2.79	0.35	-8.53	20	-1.57	1.94	0.35	-8.53	0
<i>Body Mass Index</i>	(Kg/M^2)	2	-0.27	24	-0.11	0.40	0.70	-0.69	69	-0.16	0.78	1.38	-5.12	57
<u>6MDW: Resting</u>														
<i>Heart Rate</i>	(bpm)	2	-1.50	26	1.23	5.34	17.00	-6.60	71	0.98	6.02	18.00	-23.00	76
<i>Systolic Blood Pressure</i>	(mm Hg)	2	-1.00	26	0.92	12.71	48.00	-17.43	71	-3.56	10.98	48.00	-32.00	29
<i>Diastolic Blood Pressure</i>	(mm Hg)	2	-6.00	26	-2.50	5.27	7.00	-14.67	71	-2.52	5.49	12.80	-15.00	80
<i>SaO2</i>	(%)	2	+3.00	26	1.13	3.86	18.60	-3.00	70	0.82	3.00	18.60	-7.00	91
<i>Oxygen Flow Rate</i>	(L/min)	2	+1.50	23	0.02	0.85	1.50	-3.33	63	0.09	0.93	2.00	-3.52	2
<i>Rating of Perceived Dyspnea</i>	(1-4)	2	0.00	26	-0.04	0.44	1.00	-1.00	63	-0.07	0.46	1.50	-1.00	40
<u>6MDW: During</u>														
<i>Lowest SaO2 Observed</i>	(%)	2	0.00	26	1.06	3.88	17.00	-5.00	68	1.16	2.89	17.00	-5.00	N/A

Your Program
Date Range

ABC Hospital
7/1/2002 - 6/30/2003

Measured Change Between Pre Program and Post Program

		Your Program		Programs in ISCVPR					Programs Nationwide					Your Rank
		<i>n</i>	<i>Avg</i>	<i>Count</i>	<i>Avg</i>	<i>StDev</i>	<i>Hi</i>	<i>Low</i>	<i>Count</i>	<i>Avg</i>	<i>StDev</i>	<i>Hi</i>	<i>Low</i>	<i>National Percentile</i>
<u>6MDW: Peak</u>														
<i>Distance Walked</i>	(feet)	2	+213.00	26	222.01	197.44	660.00	-250.00	70	238.80	146.78	660.00	-250.00	42
<i>METs</i>	(METs)	2	+0.31	26	0.32	0.29	0.96	-0.36	70	0.35	0.21	0.96	-0.36	42
<i>Heart Rate</i>	(bpm)	2	+28.00	26	2.05	8.00	28.00	-18.75	68	1.60	7.40	28.00	-18.75	N/A
<i>Systolic Blood Pressure</i>	(mm Hg)	2	+2.00	26	-0.15	9.11	19.00	-20.50	64	-0.70	14.46	80.00	-37.33	N/A
<i>Diastolic Blood Pressure</i>	(mm Hg)	2	+3.00	26	-1.79	4.70	6.17	-12.00	64	-2.23	4.37	8.00	-12.64	N/A
<i>Rating of Perceived Dyspnea</i>	(1-4)	2	-0.50	26	-0.42	0.50	0.67	-1.40	63	-0.51	0.64	0.75	-3.00	N/A
<i>Oxygen Saturation</i>	(%)	2	0.00	25	1.14	3.62	17.20	-2.00	67	0.76	2.75	17.20	-4.00	39
<u>6MDW: Recovery</u>														
<i>Heart Rate</i>	(bpm)	2	+3.00	25	0.04	4.89	11.80	-8.20	65	0.01	5.55	16.00	-16.00	22
<i>Systolic Blood Pressure</i>	(mm Hg)	2	-12.00	26	-1.54	7.20	21.00	-13.50	66	-3.29	9.48	38.00	-24.00	86
<i>Diastolic Blood Pressure</i>	(mm Hg)	2	-7.00	26	-2.18	5.14	13.67	-10.67	66	-2.66	5.32	13.67	-19.67	89
<i>Oxygen Saturation</i>	(%)	2	+0.50	26	-0.08	0.92	1.60	-2.00	66	0.40	1.75	9.00	-6.85	60
<i>Rating of Perceived Dyspnea</i>	(1-4)	2	0.00	26	-0.02	0.53	1.00	-1.25	61	-0.11	0.52	1.00	-1.50	42
<u>Economic Domain</u>														
<i>Number of Medications</i>	(meds)	2	+1.00	18	-0.22	0.64	1.00	-2.00	55	-0.29	0.97	1.33	-5.33	4
<u>Medical System Utilization</u>														
<i>ER Visits</i>	(visits)	2	+0.50	19	-0.79	0.72	0.50	-3.00	49	-0.71	0.67	0.50	-3.00	0
<i>Hospital Admissions</i>	(visits)	2	0.00	19	-0.66	0.52	0.00	-1.75	51	-0.66	0.53	0.00	-2.25	14
<i>Physician Visits</i>	(visits)	2	-4.50	19	-4.12	2.31	0.00	-8.30	45	-3.94	3.02	2.00	-10.00	66
<u>Health Domain</u>														
<u>SF-36v2™ Health Survey</u>														
<i>Physical Function</i>	(NBS)	1	+8.48	22	2.56	3.76	10.27	-3.99	66	5.24	8.43	60.00	-3.99	86

Your Program
Date Range

ABC Hospital
7/1/2002 - 6/30/2003

Measured Change Between Pre Program and Post Program

		<i>Your Program</i>		<i>Programs in ISCVPR</i>					<i>Programs Nationwide</i>					<i>Your Rank</i>
		<i>n</i>	<i>Avg</i>	<i>Count</i>	<i>Avg</i>	<i>StDev</i>	<i>Hi</i>	<i>Low</i>	<i>Count</i>	<i>Avg</i>	<i>StDev</i>	<i>Hi</i>	<i>Low</i>	<i>National Percentile</i>
<i>Role Functioning Physical</i>	(NBS)	1	-9.30	22	4.97	6.14	19.73	-9.30	66	7.90	8.67	35.71	-20.93	2
<i>Role Functioning Emotional</i>	(NBS)	1	-3.70	22	5.86	7.04	20.28	-6.10	66	6.01	12.00	67.00	-29.62	6
<i>Bodily Pain</i>	(NBS)	1	+4.52	22	0.42	5.11	7.78	-15.22	66	2.32	6.64	33.00	-15.22	74
<i>General Health</i>	(NBS)	1	0.00	22	0.41	4.11	8.59	-9.37	66	2.37	6.60	42.00	-9.37	29
<i>Vitality</i>	(NBS)	1	+12.10	22	4.11	4.54	12.10	-4.37	66	6.90	6.14	35.00	-4.37	86
<i>Social Functioning</i>	(NBS)	1	+5.28	22	3.41	4.99	11.16	-10.57	66	5.09	7.43	25.00	-21.14	40
<i>Mental Health</i>	(NBS)	1	-5.44	22	1.93	4.55	8.16	-6.66	66	3.54	6.73	44.00	-8.16	6
<i>Reported Health Transition</i>	(1-5)	1	-2.00	22	-0.59	0.73	1.00	-2.00	64	-0.82	0.77	1.00	-3.00	98
<i>PCS-36</i>	(NBS)	1	+3.99	18	1.11	3.70	6.68	-9.18	50	3.10	3.80	12.57	-9.18	53
<i>MCS-36</i>	(NBS)	1	-1.23	18	4.30	4.80	13.15	-3.55	50	4.39	5.14	15.35	-10.39	12