

## Networking Instructions

The Orion Outcomes software is capable of operating on a network through a client-server configuration. Many facilities have requested this feature to enable multiple users to enter and analyze the outcome data simultaneously. This document serves as a guide to a system administrator on how to setup Orion Outcomes in this networked fashion.

### Requirements

In order to run Orion Outcomes in a network configuration, the following items must be purchased from Orion Software Development.

- One Orion Outcomes Clinic Edition or Multi-Program Edition software product
- Orion Outcomes client licenses for all additional client machines

### Capabilities

Once Orion Outcomes is setup in a network configuration, the following capabilities will be available.

- Multiple client machines will be able to access the same database simultaneously.
- Different client machines will not be able to update the same patient record simultaneously to prevent any data overwriting.

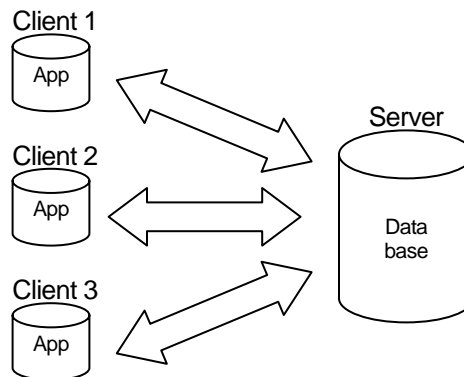
### Setup Overview

Each computer that wishes to access the database will need to have the Orion Outcomes application software installed locally. Running the application itself over a network, from a server, will not allow multiple users to run the software simultaneously.

Users will share a common database using their own local copy of the application program.

---

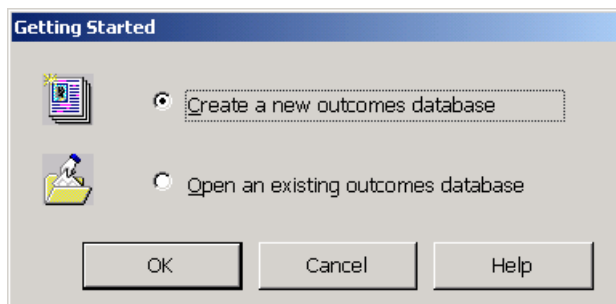
An example of a possible configuration is depicted below. It shows three client machines accessing the shared data source on a server.



## First Client Installation

The main goal of the first client installation is to install the database file on the server. The server may also be used to run Orion Outcomes application locally.

1. Install Orion Outcomes from the CD-ROM according to the installation instructions.
2. After installation is completed, launch Orion Outcomes from the Windows Start menu.
3. As Orion Outcomes starts, it will show a Getting Started window. Select the option for creating a new database.



4. After pressing OK, you will be asked where you want to install the database. If you choose the default location, it will install the database in the program directory for Orion Outcomes. Most likely, you will choose No and select a path on a file server that is accessible by all the client machines.

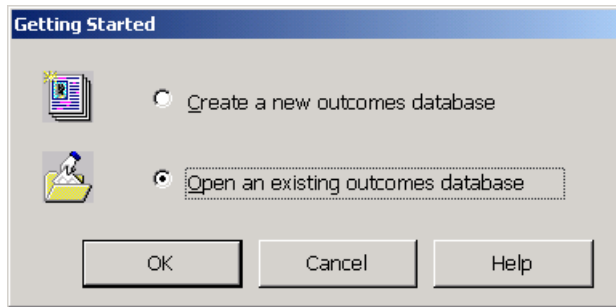
The first client machine setup is completed.

## Additional Client Installations

We will not install a local database on the additional clients because they will access the database located on the server.

1. Install Orion Outcomes from the CD-ROM according to the installation instructions.
2. After installation is completed, launch Orion Outcomes from the Windows Start menu.

3. As Orion Outcomes starts, it will show a Getting Started window. Select the option for opening an existing database.



4. After pressing OK, you will be asked to locate the existing database. Locate the database on the path on a file server that was setup in the first client installation.
5. Repeat this procedure for each additional client machine.

You may verify the setup by entering patient data on one computer and viewing it on another.

## Technical Support

If you have trouble with this installation procedure, please contact Orion Software Development.

Internet: [support@orionoutcomes.com](mailto:support@orionoutcomes.com)

Web Access: <http://www.orionoutcomes.com/>

Telephone: (866) ORION-SW or (720) 494-7950