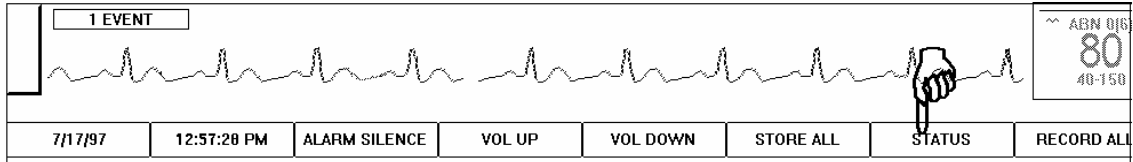


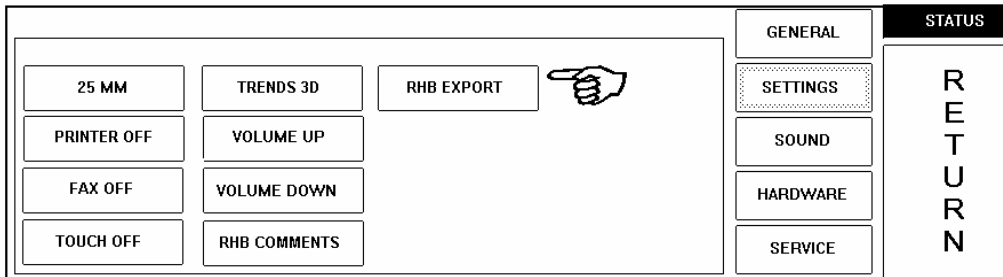
Exporting Data from TrensCenter to Outcome Program



Touch the **STATUS** control at the lower right side of the screen.

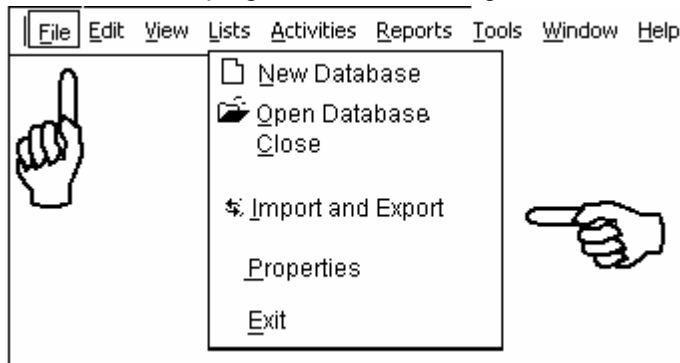


Touch the **SETTINGS** control. The SETTINGS screen will be displayed.

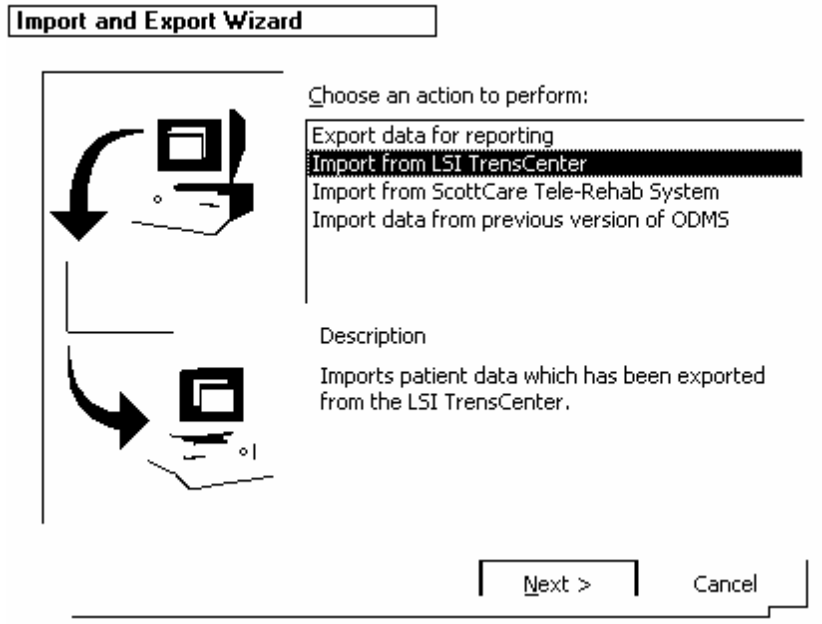


Touch the **RHBEXPORT** control. Touch **RETURN**. A file will be created with a list of all active patients demographic data. The name of the file is OUTCOME.TXT. This file will be imported into the Outcomes Program by the following method.

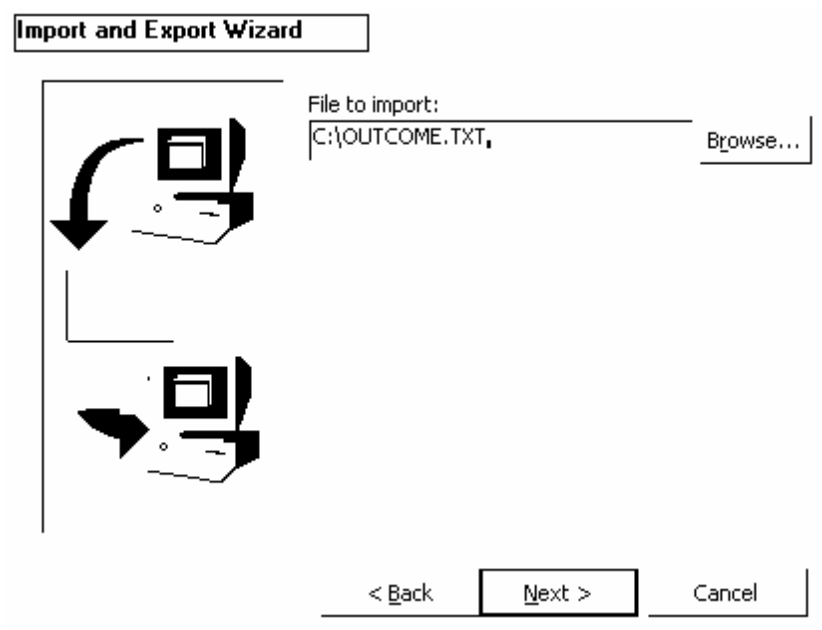
From the ODMS Clinic Edition program do the following:



Click on **FILE**. Click on **Import and Export**.



Click on **Import from LSI TrensCenter**. Click on **Next**.



For Users of Orion 1.X software, place the cursor in the File to Import Box and type in the file name **C:\OUTCOME.TXT** and click **Next**. Click on **Finish**. The data file will be imported into the Outcomes Program.

For Users of Orion 2.X software, place the cursor in the File to Import Box and type in the file name **C:\OUTCOME1.TXT** and click **Next**. Click on **Finish**. The data file will be imported into the Outcomes Program.