



Premium
Benchmarking Report

Q3 2003

Cardiac Program Comparison

Prepared for: ABC Hospital
Attention: John Doe
123 Main Street
Somewhere IN 12345

CONFIDENTIAL: This report is only to be viewed by authorized personnel of the facility named above.

ORION SOFTWARE DEVELOPMENT

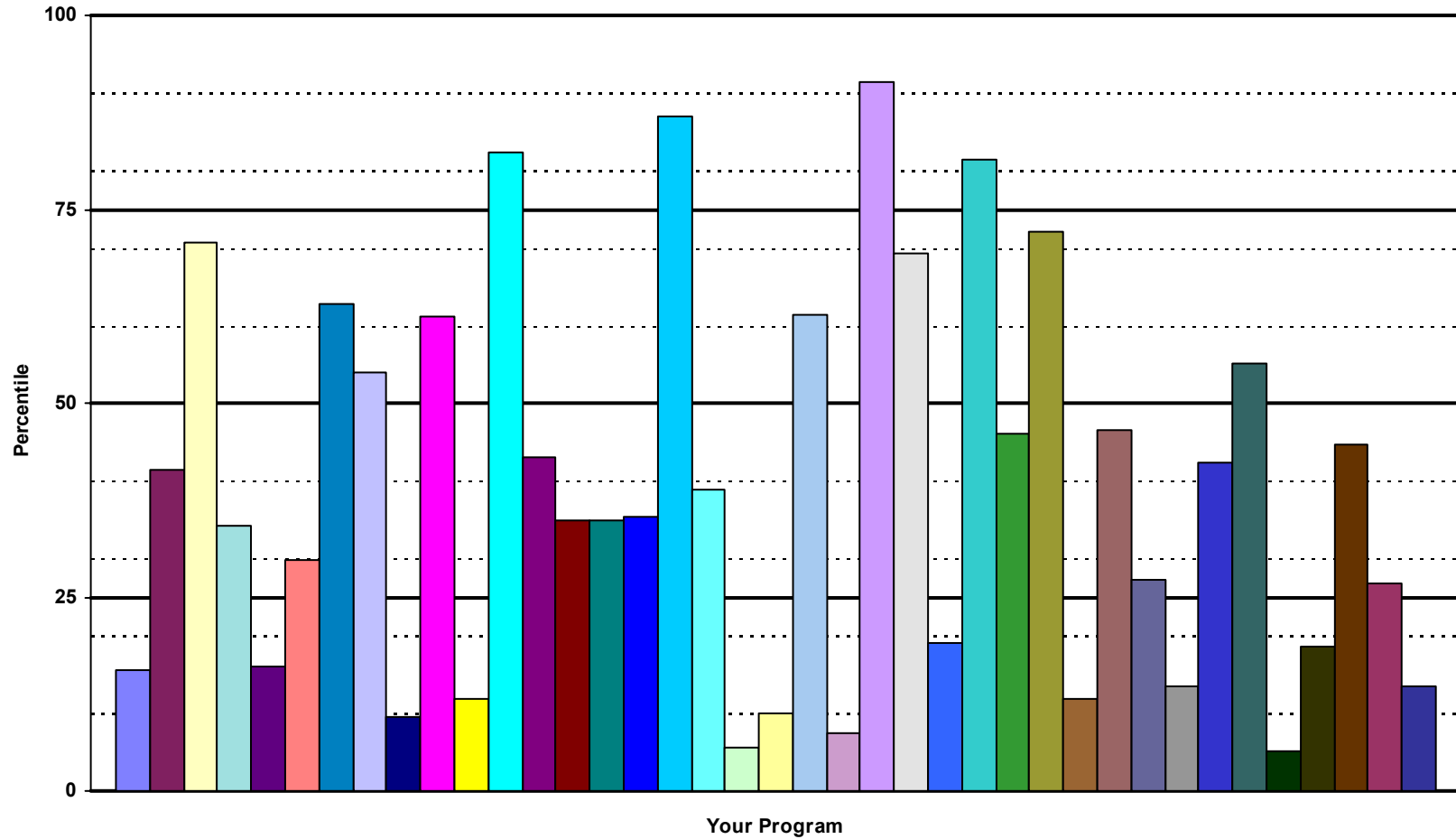
11691 Montgomery Circle
Longmont CO 80504

Phone: (866) ORION-SW
Fax: (720) 494-7951
E-mail: benchmarking@orionoutcomes.com
WWW: orionoutcomes.com

Your Program
Date Range

ABC Hospital
7/1/2002 - 6/30/2003

National Percentile Summary
Your Average Percentile 39.3



Your Program
Date Range

ABC Hospital
7/1/2002 - 6/30/2003

Measured Change Between Pre Program and Post Program

		Your Program		Programs in ISCVPR					Programs Nationwide					Your Rank
		<i>n</i>	<i>Avg</i>	<i>Count</i>	<i>Avg</i>	<i>StDev</i>	<i>Hi</i>	<i>Low</i>	<i>Count</i>	<i>Avg</i>	<i>StDev</i>	<i>Hi</i>	<i>Low</i>	<i>National Percentile</i>
<u>Behavioral Domain</u>														
<i>Knowledge Test</i>	(0-40)	21	+1.24	28	3.10	2.04	8.00	-1.00	84	3.09	2.05	8.00	-2.00	16
<i>Cigarettes Smoked</i>	(cigs)	2	0.00	22	-5.79	8.65	1.50	-36.67	76	-4.22	8.32	5.00	-40.00	41
<i>Beck Depression Inventory</i>	(pts.)	35	-2.94	8	-3.81	2.61	-1.00	-9.00	35	-2.86	3.77	1.50	-21.00	71
<u>Behavioral Compliance</u>														
<i>Follows Diet</i>	(1-5)	23	+0.13	33	0.25	0.32	1.00	-0.33	109	0.37	0.54	3.45	-0.38	34
<i>Follows Medications</i>	(1-5)	26	0.00	34	0.05	0.18	1.00	-0.13	113	0.04	0.15	1.00	-0.23	16
<u>Exercise Activity</u>														
<i>Days per Week of Exercise</i>	(days/week)	28	+0.89	34	1.20	1.07	3.00	-2.00	119	1.30	1.06	3.75	-2.50	30
<i>Minutes Exercising per Session</i>	(minutes)	28	+29.50	34	25.04	10.40	46.67	0.00	119	24.93	11.25	59.67	0.00	63
<u>Clinical Domain</u>														
<i>Fasting Blood Glucose</i>	(mg/dl)	7	-19.86	1	-19.86		-19.86	-19.86	27	-11.88	32.53	41.50	-85.00	69
<i>Weight</i>	(lbs.)	46	-0.91	34	-0.35	3.02	8.77	-8.00	125	-0.61	2.35	8.77	-8.00	54
<i>Height</i>	(inches)	46	+0.04	34	0.02	0.23	0.88	-0.53	123	-0.02	0.26	0.88	-1.33	N/A
<i>Percent Body Fat</i>	(%)	41	+0.54	15	-0.74	3.17	6.82	-6.79	54	-1.19	2.33	6.82	-6.79	9
<i>Body Mass Index</i>	(Kg/M^2)	46	-0.21	34	-0.05	0.49	1.32	-1.21	122	-0.08	0.42	1.32	-1.52	61
<u>6MDW: Resting</u>														
<i>Heart Rate</i>	(bpm)	46	+2.07	33	-1.09	3.63	4.71	-9.33	103	-1.77	4.36	8.71	-29.00	12
<i>Systolic Blood Pressure</i>	(mm Hg)	46	-5.30	33	0.51	6.78	21.00	-12.00	103	-0.41	6.56	40.00	-12.00	82
<i>Diastolic Blood Pressure</i>	(mm Hg)	46	-0.43	33	-1.42	3.30	8.41	-11.00	103	-1.21	3.44	8.41	-12.00	43
<u>6MDW: Peak</u>														
<i>Distance Walked</i>	(feet)	46	+238.09	32	308.69	161.03	711.12	80.00	84	339.61	253.35	2112.00	80.00	35
<i>METs</i>	(METs)	46	+0.35	32	0.45	0.23	1.03	0.11	84	0.49	0.37	3.07	0.11	35

Your Program
Date Range

ABC Hospital
7/1/2002 - 6/30/2003

Measured Change Between Pre Program and Post Program

		Your Program		Programs in ISCVPR					Programs Nationwide					Your Rank
		n	Avg	Count	Avg	StDev	Hi	Low	Count	Avg	StDev	Hi	Low	National Percentile
Heart Rate	(bpm)	45	-0.44	33	4.60	5.54	15.83	-11.00	86	4.35	5.20	15.83	-11.00	N/A
Systolic Blood Pressure	(mm Hg)	46	+0.48	33	1.65	9.43	23.75	-31.00	85	2.67	8.05	25.91	-31.00	N/A
Diastolic Blood Pressure	(mm Hg)	46	+1.57	33	-1.11	3.78	5.71	-11.00	85	-0.80	3.77	10.00	-11.00	N/A
Rating of Perceived Exertion	(6-20)	46	+0.07	33	-0.06	0.75	1.06	-2.50	82	-0.02	0.94	5.00	-2.50	N/A
<u>6MDW: Recovery</u>														
Heart Rate	(bpm)	45	+1.42	33	0.31	4.67	8.75	-13.00	86	0.83	5.72	23.00	-20.00	35
Systolic Blood Pressure	(mm Hg)	45	-6.22	33	-2.47	7.52	7.75	-30.00	86	-1.60	6.16	20.00	-30.00	87
Diastolic Blood Pressure	(mm Hg)	45	+0.13	33	-0.89	3.25	6.00	-7.88	86	-0.84	4.30	10.00	-20.00	39
<u>Lipid Profile</u>														
Total Cholesterol Level	(mg/dl)	9	+8.78	14	-55.69	64.82	8.78	-219.00	74	-30.76	38.77	59.00	-219.00	5
LDL	(mg/dl)	9	+0.89	11	-19.60	21.52	10.00	-56.25	71	-17.60	22.81	57.00	-94.50	10
HDL	(mg/dl)	9	+1.33	11	-0.15	4.64	4.20	-11.20	71	-1.06	11.10	30.00	-63.00	61
Triglycerides	(mg/dl)	9	+26.67	11	-94.12	233.60	26.67	-792.67	69	-41.24	101.81	65.75	-792.67	7
CHO/HDL	(mg/dl)	9	+0.11	11	-0.64	0.63	0.11	-1.61	70	-0.14	6.54	51.82	-12.34	91
<u>Economic Domain</u>														
Number of Medications	(meds)	43	+0.14	24	-0.21	0.65	1.14	-1.40	95	-0.23	0.61	2.00	-3.00	19
<u>Medical System Utilization</u>														
ER Visits	(visits)	43	-1.12	25	-0.73	0.42	0.02	-1.43	76	-0.77	0.46	0.20	-2.00	81
Hospital Admissions	(visits)	43	-1.16	25	-1.33	0.76	0.00	-3.67	79	-1.17	0.69	0.00	-4.00	46
Physician Visits	(visits)	41	-4.15	23	-3.12	2.27	0.17	-8.00	69	-2.88	2.33	2.00	-8.91	72
<u>Health Domain</u>														
<u>SF-36v2™ Health Survey</u>														
Physical Function	(NBS)	22	+4.04	32	6.95	2.57	12.16	0.00	119	7.45	4.35	22.78	-5.98	12

Your Program
Date Range

ABC Hospital
7/1/2002 - 6/30/2003

Measured Change Between Pre Program and Post Program

		Your Program		Programs in ISCVPR					Programs Nationwide					Your Rank
		<i>n</i>	<i>Avg</i>	<i>Count</i>	<i>Avg</i>	<i>StDev</i>	<i>Hi</i>	<i>Low</i>	<i>Count</i>	<i>Avg</i>	<i>StDev</i>	<i>Hi</i>	<i>Low</i>	<i>National Percentile</i>
Role Functioning Physical	(NBS)	22	+10.46	32	10.60	4.15	26.53	0.00	119	12.35	7.37	45.83	-2.33	47
Role Functioning Emotional	(NBS)	22	+4.54	32	6.71	4.61	17.27	-3.33	119	7.85	8.07	58.50	-10.93	27
Bodily Pain	(NBS)	22	+3.44	32	6.92	3.45	16.13	0.00	119	6.92	4.39	20.75	-12.42	14
General Health	(NBS)	22	+1.58	32	2.22	1.94	6.71	-2.94	119	1.94	2.93	10.78	-14.66	42
Vitality	(NBS)	22	+7.43	32	6.78	3.16	14.34	-2.69	119	7.49	3.93	23.00	-3.02	55
Social Functioning	(NBS)	22	+2.88	32	8.21	3.21	15.85	0.00	119	9.33	5.55	28.25	-15.53	5
Mental Health	(NBS)	22	+1.48	32	3.63	3.14	8.16	-6.57	119	3.74	3.84	12.00	-15.43	19
Reported Health Transition	(1-5)	22	-0.73	32	-0.74	0.45	0.13	-1.57	115	-0.76	0.48	1.00	-2.50	45
PCS-36	(NBS)	22	+5.87	26	7.58	2.11	12.64	3.41	98	7.64	2.93	17.08	-0.34	27
MCS-36	(NBS)	22	+2.64	26	5.50	2.62	8.87	-0.82	98	5.39	3.10	14.29	-5.56	13